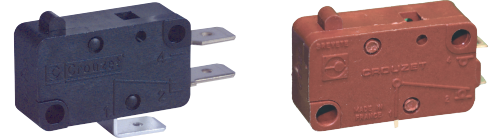


MINIATURE MICROSWITCHES - HEAVY DUTY

83160

- › Coil spring snap-action mechanism with wiping contacts
- › Ratings up to 16(4) A 250 V~ and 10(4) A 400 V~
- › Version with magnetic blowout for enhanced DC breaking capacity up to 5 A 250 V---
- › Long service life: 200 000 operations at nominal rating and up to 10 millions on light load
- › Contact gap less or greater than 3 mm (micro-disconnection (μ) or full disconnection)
- › Operating temperature -40 °C up to +150 °C
- › cURus and NF approved (except 831606 SP3697)
- › Wide choice of actuators: pinned or flexible, stainless steel or plastic



Main specifications

		Standard 831600	Reduced force 831603	Low force 831604	Wide contact gap 831606	High DC rating 831606 SP 3697
Function	Connections					
I (changeover)	W2	83160005	83160320	83160420	83160602	83160664
I (changeover)	W3	83160006	83160301	83160401	83160601	83160679
I (changeover)	W6	83160045	83160321	83160415	●*	●*
I (changeover)	X1-X2	●	●	●	●*	●*
I (changeover)	X3	83160143	●	●	●*	●*
R (normally closed)	W2	83160001	●	●	●	●
R (normally closed)	W3	83160003	83160319	●	83160621	●
R (normally closed)	W6	●	●	●	●*	●*
R (normally closed)	X2-X3	●	●	●	●*	●*
C (normally open)	W2	83160002	83160324	●	83160603	●
C (normally open)	W3	83160004	83160316	83160402	83160622	●
C (normally open)	W6	83160047	●	●	●*	●*
C (normally open)	X2-X3	●	●	●	●*	●*
Electrical characteristics						
Rating nominal / 250 V AC (A)		16	10	6	16	16
Rating nominal / 250 V DC (A) **		0.5	0.5	0.4	0.8	5
Rating thermal / 250 V (A)		20	15	10	20	20
Rating NF / 250 V AC (A)		16(4)	10(4)	6(2)	16(4)	-
Rating UL / 125/250 V AC (A)		8	8	6	10	-
Mechanical characteristics						
Maximum operating force (N)		4	2	1	5	5
Min. Release force (N)		1.5	0.6	0.3	1	1
Maximum total travel force (N)		6.5	3	1.5	7	7
Max. Allowable overtravel force (N)		20	20	20	20	20
Rest position max. (mm)		15.6	15.6	15.6	15.7	15.7
Operating position (mm)		14.8±0.3	14.8±0.3	14.7±0.3	14.6±0.4	14.6±0.4
Maximum differential travel (mm)		0.3	0.4	0.35	0.7	0.7
Min. overtravel CRA (mm)		1.3	1.3	1.3	1	1
Ambient operating temperature (°C)		-40 → +125	-40 → +125	-40 → +125	-40 → +125	-40 → +125
Mechanical life (operations)		10 ⁷	10 ⁷	10 ⁷	10 ⁶	10 ⁶
Contact gap (mm)		1.2	1.2	1.2	3.2	3.2
Weight (g)		6.7	6.7	6.7	6.7	6.7

* Please consult us ** with resistive load

Additional specifications

- Case, Button: PBT GF (UL 94-V0 / GWFI 960 °C)
PA66 GF (GWFI 960 °C) - 831606 SP3697 case
- Contacts: silver alloy (gold-plated silver alloy : on request)
- Terminals: brass (except W2/X : copper nickel), silver plated common
- Levers: stainless steel or polyamide, polyamide roller
- Degree of protection: IP40 (mechanism)
- Proof tracking index: PTI 250 (PTI 600 on 831606 SP3697)
- Recommended min actuating speed: 0.1 mm/s

Product adaptations



- › Special levers: special shapes and lengths
- › Special connections: angled, screw with clamp (W5), full wiring with custom connector....
- › Telescopic plunger and adjustable fixing by threaded barrel: plastic version (153L accessory) or metal version (SP9603 or 83556, single or double pole)
- › High operating temperature: +150 °C
- › Variant for irradiated environment (SF1320)
- › 400 Vac NF approved versions (SP9654)
- › cURus / NF approvals for 831606 SP3697

Standard product

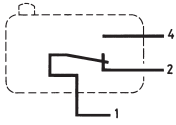
Product made to order



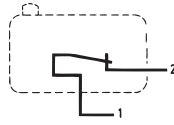
Contact us

Principles

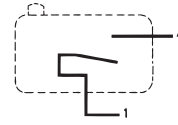
Single break snap-action switch
Changeover - SPDT (form C)



Normally closed - SPST-NC (form B)

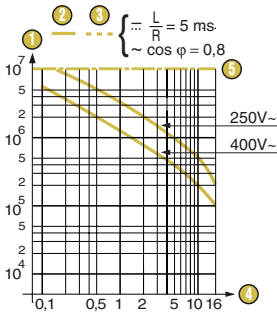


Normally open - SPST-NO (form A)

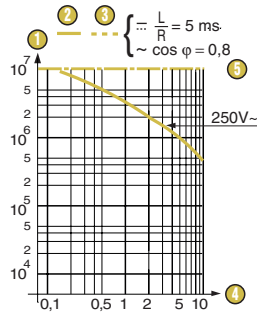


Curves

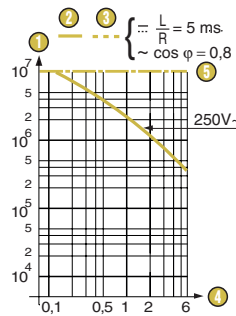
Operating curve for type 831600



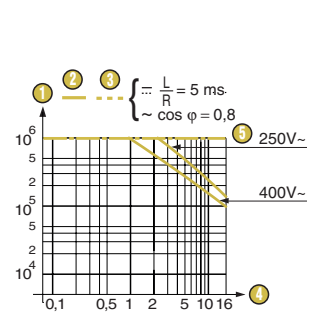
Operating curve for type 831603



Operating curve for type 831604



Operating curve for types 831606



- 1 Number of cycles
- 2 Resistive circuit
- 3 Inductive circuit
- 4 Current in Amps
- 5 Mechanical life limit

- 1 Number of cycles
- 2 Resistive circuit
- 3 Inductive circuit
- 4 Current in Amps
- 5 Mechanical life limit

- 1 Number of cycles
- 2 Resistive circuit
- 3 Inductive circuit
- 4 Current in Amps
- 5 Mechanical life limit

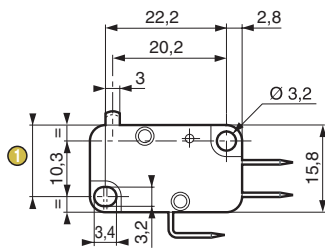
- 1 Number of cycles
- 2 Resistive circuit
- 3 Inductive circuit
- 4 Current in Amps
- 5 Mechanical life limit

DC electrical life for 831606 SP 3697: 250 V--- 5 A resistif 300 000 cycles
 250 V--- 1,5 A L/R 5 ms 30 000 cycles
 250 V--- 0,5 A L/R 50 ms 50 000 cycles
 125 V--- 3 A L/R 5 ms 30 000 cycles

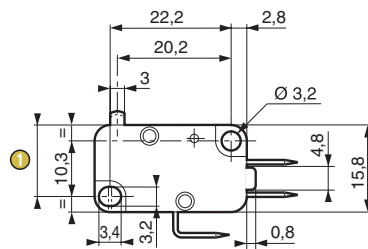
Dimensions

Product

831600 / 3 / 4 / 6



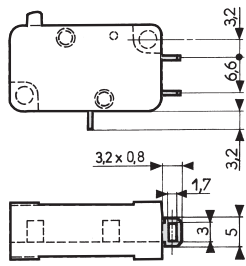
831606 SP 3697



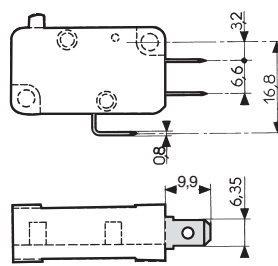
1 Total travel position = 13.2 max.

Connections

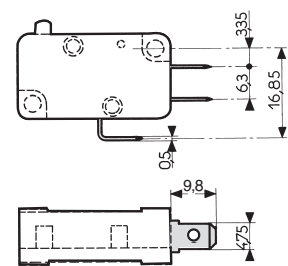
W2 solder



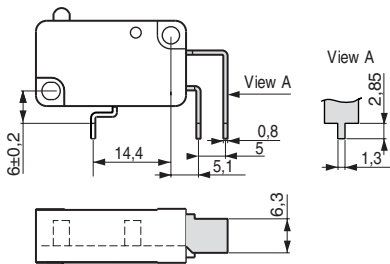
W3 quick-connect 6.3 x 0.8



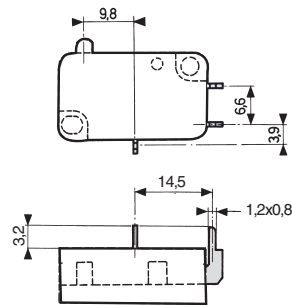
W6 quick-connect 4.8 x 0.5



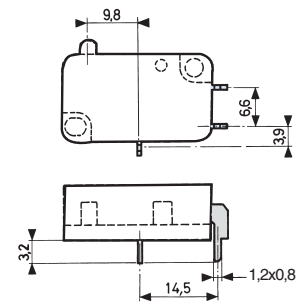
X1 for printed circuit board, straight output



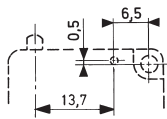
X2 for PCB, rear output



X3 for PCB, front output

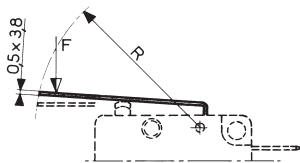


Actuator mounting positions

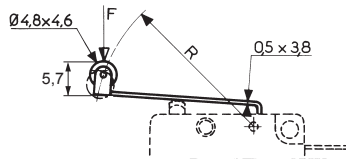


Actuators

153AX flat






153EX roller



Other shapes and dimensions: consult us

Actuator and mounting accessories

Actuators	Flat 153AX R29.7			Roller 153EX R15.8			Roller 153 EX R28.7			
										
	831600	831603	831606	831600	831603	831606	831600	831603	831606	
Operating position	mm	15.3 ±0.5	15.3 ±0.5	14.4 ±0.6	20.5 ±0.45	20.5 ±0.45	20.3 ±0.55	20.5 ±0.65	20.5 ±0.65	19.6 ±0.75
Operating force - max.	N	2	1	2.6	4	2	5	2	1	2.6
Release force - min.	N	0.4	0.25	0.3	1	0.55	0.75	0.4	0.25	0.3
Pretravel - max.	mm	2.5	2.5	3.1	1.2	1.2	1.4	2.5	2.5	3.1
Differential travel max.	mm	0.6	0.8	1.5	0.3	0.4	0.7	0.6	0.8	1.5
Total travel max.	mm	2.3	2.3	2.3	2.3	2.3	2.3	4.6	4.6	4.6

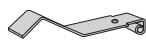
We recommend that levers are assembled in our factories

Actuators

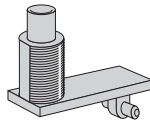
Two-pole **153A2X** R15,9**



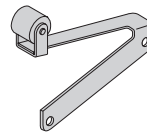
Dummy roller **153FX** R24.3**



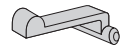
Telescopic plunger **153L****



Flexible with roller **153B****



Plastic **153 V****



** Please consult us

83160 microswitches with referenced actuators

	Actuator	153AX R29.7	153EX R15.8	153EX R28.7
831600	I W2	●	83160134	83160038
	I W3	83160067	83160029	83160065
	I W6	83160115	83160069	●
831603	I W2	83160345	●	●
	I W3	83160347	83160327	83160329
	I W6	●	●	●
831606	I W2	●	●	●
	I W3	●	83160669	83160674
831606 SP3697	I W2	●	83160681	●
	I W3	●	83160680	●

Installation recommendations

See "Basic technical concepts"

How to order

Use the 8 digit part numbers when they are defined

Other cases, precise: Type of microswitch - Function - Connection - Actuator* - Adaptation*

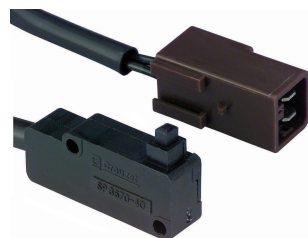
* if needed

Example: 831600 I X1 153AX R29.7

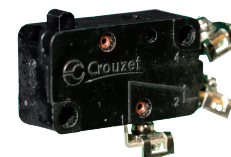
Examples of special adaptations



Special lever and angled W3 terminals



Full wiring with custom connector



Customised version for nuclear application. Has radiation-resistant housing, 180 °C max operating temperature, W5 screw terminals and magnetic blowout for highly inductive circuit switching at 250 V...

Standard product

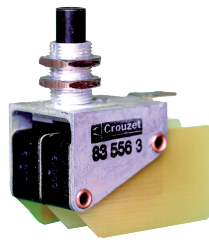
Product made to order



Contact us



Telescopic plunger with Ø12 mm adjustable fixing and 4 mm overtravel. Metal version for heavy duty (SP9603)



Telescopic plunger with Ø10 mm threaded barrel, metal bracket and plastic button. Single or double pole (83556)